



STAINLESS STEEL WELD NECK FLANGE

TECHNICAL DATA SHEET

TYPE:

- WELD NECK FLANGE
- SLIP-ON FLANGE
- LAP JOINT FLANGE
- SOCKET WELD FLANGE
- THREADED FLANGE
- BLIND FLANGE



FLANGE RATING:

- Specify the flange Standard:
 - ASTM-A182
- Determine the pressure requirements, for the flange PN rating, (e.g. PN 16
ANSI B16.5 Class150、300、600、900、1500 (WN、SO、BL、TH、LJ、SW)

DIAMETER:

- Nominate the nominal bore diameter in mm (DN), according to the applicable flange standard.

FLANGE BORE:

- Nominate the actual flange bore in mm.

For weld neck flanges, nominate the pipe, or branch, steel shell outside diameter.

FACE TYPE:

- - Flat face
- - Raised face
- - O-ring nut

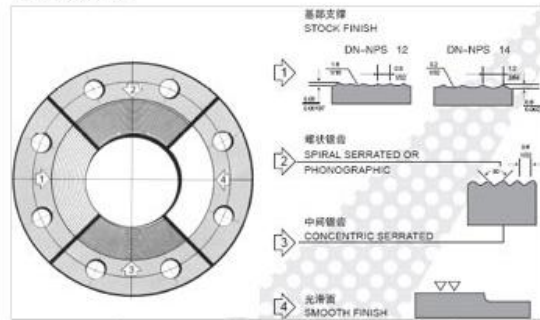
MATERIAL:

- - 304/304L
- - 316/316L

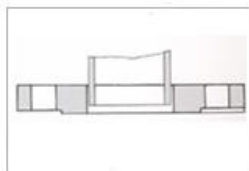
法兰剖面图



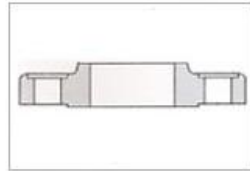
密封面参数



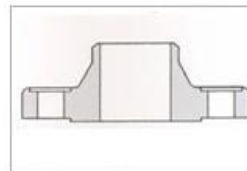
法兰结构图



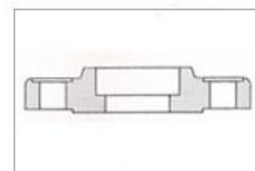
板式平焊法兰(PL)



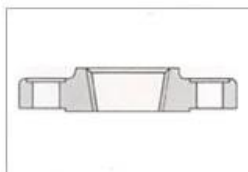
带颈平焊法兰(SO)



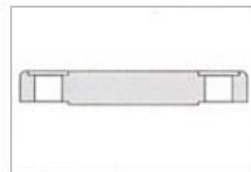
带颈对焊法兰(WN)



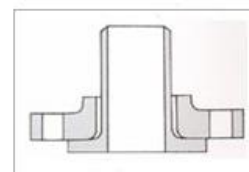
承插焊法兰(DN15-80)SW



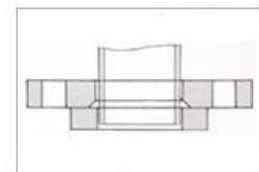
螺纹法兰(DN15-80)TH



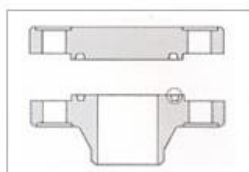
法兰盖(BL)



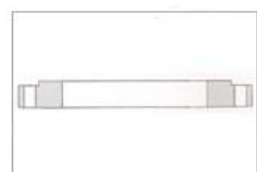
带颈对焊环松套法兰LF.SE



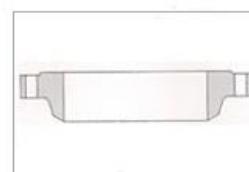
平焊环松套法兰PJ.RJ



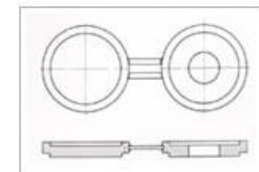
环槽面法兰及法兰盖



大直径平板法兰(600-4800mm)

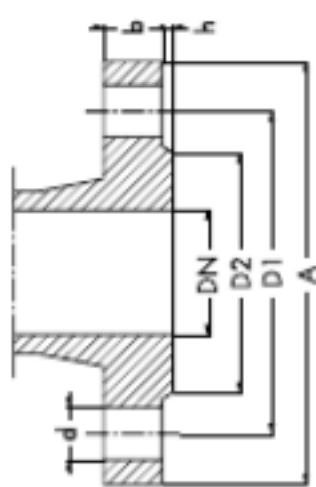


大直径高颈法兰(600-4000mm)



八字盲板BL

flange dimensions and drilling to ANSI B 16.5



DN = diameter nominal (size)
 A = flange ?
 b = thickness of flange
 D₂ = diameter of raised face ?
 D₁ = diameter of bolt circle ?
 n = number of bolts
 d = diameter of bolt holes ?
 h = height of raised face (RF)

h* = 1/16" = 1.6 mm for ANSI Class 150 - 300

h* = 1/4" = 6.4 mm for ANSI Class 400 - 2500

* for steel flanges only

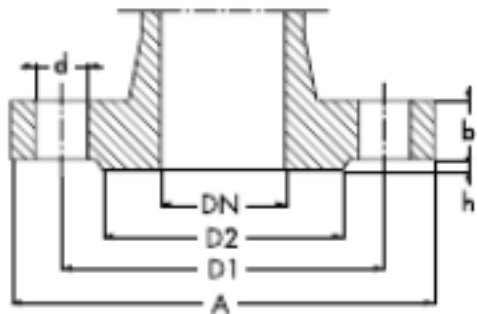
b = raised face included for ANSI Class 150 - 300

b = raised face not included for ANSI Class 400 - 2500

DN		125/150 lbs		300 lbs		400 lbs		600 lbs		900 lbs		1500 lbs		2500 lbs	
		inch	mm	inch	mm	inch	mm	inch	mm	inch	mm	inch	mm	inch	mm
1/2"	A	3 1/2	88.9	3 3/4	95.2	3 3/4	95.2	3 3/4	95.2	4 3/4	121	4 3/4	121	5 1/4	133.4
	b	7/16	11.1	9/16	14.3	9/16	14.3	9/16	14.3	7/8	22.2	7/8	22.2	1 3/16	30.2
	D ₂	1 3/8	34.9	1 3/8	34.9	1 3/8	34.9	1 3/8	34.9	1 3/8	34.9	1 3/8	34.9	1 3/8	34.9
	D ₁	2 3/8	60.3	2 5/8	66.7	2 5/8	66.7	2 5/8	66.7	3 1/4	82.6	3 1/4	82.6	3 1/2	88.9
	n	4	4	4	4	4	4	4	4	4	4	4	4	4	4
	d	5/8	15.9	5/8	15.9	5/8	15.9	5/8	15.9	5/8	15.9	7/8	22.2	7/8	22.2
3/4"	A	3 7/8	98.4	4 5/8	117.5	4 5/8	117.5	4 5/8	117.5	5 1/8	130	5 1/8	130	5 1/2	139.7
	b	1/2	12.7	5/8	15.9	5/8	15.9	5/8	15.9	1	25.4	1	25.4	1 1/4	31.8
	D ₂	1 11/16	42.9	1 11/16	42.9	1 11/16	42.9	1 11/16	42.9	1 11/16	42.9	1 11/16	42.9	1 11/16	42.9
	D ₁	2 3/4	69.8	3 1/4	82.5	3 1/4	82.5	3 1/4	82.5	3 1/2	88.9	3 1/2	88.9	3 3/4	95.2
	n	4	4	4	4	4	4	4	4	4	4	4	4	4	4
	d	5/8	15.9	3/4	19	3/4	19	3/4	19	3/4	19	7/8	22.2	7/8	22.2
1"	A	4 1/4	108	4 7/8	123.8	4 7/8	123.8	4 7/8	123.8	5 7/8	149.2	5 7/8	149.2	6 1/4	159
	b	9/16	14.3	1 1/16	17.5	1 1/16	17.5	1 1/16	17.5	1 1/8	28.6	1 1/8	28.6	1 3/8	34.9
	D ₂	2	50.8	2	50.8	2	50.8	2	50.8	2	50.8	2	50.8	2	50.8
	D ₁	3 1/8	79.4	3 1/2	88.9	3 1/2	88.9	3 1/2	88.9	4	102	4	102	4 1/4	108
	n	4	4	4	4	4	4	4	4	4	4	4	4	4	4
	d	5/8	15.9	3/4	19	3/4	19	3/4	19	1	25.4	1	25.4	1	25.4
1 1/4"	A	4 5/8	117.5	5 1/4	133.4	5 1/4	133.4	5 1/4	133.4	6 1/4	159	6 1/4	159	7 1/4	184.2
	b	5/8	15.9	3/4	19	13/16	20.6	13/16	20.6	1 1/8	28.6	1 1/8	28.6	1 1/2	38.1
	D ₂	2 1/2	63.5	2 1/2	63.5	2 1/2	63.5	2 1/2	63.5	2 1/2	63.5	2 1/2	63.5	2 1/2	63.5
	D ₁	3 1/2	88.9	3 7/8	98.4	3 7/8	98.4	3 7/8	98.4	4 3/8	111	4 3/8	111	5 1/8	130
	n	4	4	4	4	4	4	4	4	4	4	4	4	4	4
	d	5/8	15.9	3/4	19	3/4	19	3/4	19	1	25.4	1	25.4	1 1/8	28.6
1 1/2"	A	5	127	6 1/8	155.6	6 1/8	155.6	6 1/8	155.6	7	177.8	7	177.8	8	203
	b	1 1/16	17.5	13/16	20.6	7/8	22.2	7/8	22.2	1 1/4	31.8	1 1/4	31.8	1 3/4	44.5
	D ₂	2 7/8	73	2 7/8	73	2 7/8	73	2 7/8	73	2 7/8	73	2 7/8	73	2 7/8	73
	D ₁	3 7/8	98.4	4 1/2	114	4 1/2	114	4 1/2	114	4 7/8	124	4 7/8	124	5 3/4	146
	n	4	4	4	4	4	4	4	4	4	4	4	4	4	4
	d	5/8	15.9	7/8	22.2	7/8	22.2	7/8	22.2	1 1/8	28.6	1 1/8	28.6	1 1/4	31.8
2"	A	6	152.4	6 1/2	165.1	6 1/2	165.1	6 1/2	165.1	8 1/2	215.9	8 1/2	215.9	9 1/4	234.9
	b	3/4	19	7/8	22.2	1	25.4	1	25.4	1 1/2	38.1	1 1/2	38.1	2	50.8
	D ₂	3 5/8	92.1	3 5/8	92.1	3 5/8	92.1	3 5/8	92.1	3 5/8	92.1	3 5/8	92.1	3 5/8	92.1
	D ₁	4 3/4	121	5	127	5	127	5	127	6 1/2	165.1	6 1/2	165.1	6 3/4	171
	n	4	4	8	8	8	8	8	8	8	8	8	8	8	8
	d	3/4	19	3/4	19	3/4	19	3/4	19	1	25.4	1	25.4	1 1/8	28.6
2 1/2"	A	7	177.8	7 1/2	190.5	7 1/2	190.5	7 1/2	190.5	9 5/8	244	9 5/8	244	10 1/2	266.7
	b	7/8	22.2	1	25.4	1 1/8	28.6	1 1/8	28.6	1 5/8	41.3	1 5/8	41.3	2 1/4	57.2
	D ₂	4 1/8	104.8	4 1/8	104.8	4 1/8	104.8	4 1/8	104.8	4 1/8	105	4 1/8	105	4 1/8	105
	D ₁	5 1/2	139.7	5 7/8	149.2	5 7/8	149.2	5 7/8	149.2	7 1/2	190.5	7 1/2	190.5	7 3/4	197
	n	4	4	8	8	8	8	8	8	8	8	8	8	8	8
	d	3/4	19	7/8	22.2	7/8	22.2	7/8	22.2	1 1/8	28.6	1 1/8	28.6	1 1/4	31.8

flange dimensions and drilling to ANSI B 16.5

(continued)



DN = diameter nominal (size)
 A = flange ?
 b = thickness of flange
 D₂ = diameter of raised face ?
 D₁ = diameter of bolt circle ?
 n = number of bolts
 d = diameter of bolt holes ?
 h = height of raised face (RF)

h* = 1/16" = 1.6 mm for ANSI Class 150 - 300

h* = 1/4" = 6.4 mm for ANSI Class 400 - 2500

* for steel flanges only

b = raised face included for ANSI Class 150 - 300

b = raised face not included for ANSI Class 400 - 2500

DN		125/150 lbs		300 lbs		400 lbs		600 lbs		900 lbs		1500 lbs		2500 lbs	
		inch	mm	inch	mm	inch	mm	inch	mm	inch	mm	inch	mm	inch	mm
3"	A	7 1/2	190.5	8 1/4	209.6	8 1/4	209.6	8 1/4	209.6	9 1/2	241	10 1/2	267	12	305
	b	15/16	23.8	1 1/8	28.6	1 1/4	31.8	1 1/4	31.8	1 1/2	38.1	1 7/8	47.6	2 5/8	66.7
	D ₂	5	127	5	127	5	127	5	127	5	127	5	127	5	127
	D ₁	6	152.4	6 5/8	168.3	6 5/8	168.3	6 5/8	168.3	7 1/2	190.5	8	203	9	228.6
	n	4	4	8	8	8	8	8	8	8	8	8	8	8	8
	d	3/4	19	7/8	22.2	7/8	22.2	7/8	22.2	1	25.4	1 1/4	31.8	1 3/8	34.9
3 1/2"	A	8 1/2	215.9	9	228.6	9	228.6	9	228.6						
	b	15/16	23.8	1 3/16	30.2	1 3/8	34.9	1 3/8	34.9						
	D ₂	5 1/2	139.7	5 1/2	139.7	5 1/2	139.7	5 1/2	139.7						
	D ₁	7	177.8	7 1/4	184.2	7 1/4	184.2	7 1/4	184.2						
	n	8	8	8	8	8	8	8	8	8	8	8	8	8	8
	d	3/4	19	7/8	22.2	1	25.4	1	25.4	1	25.4	1 1/4	31.8	1 3/8	34.9
4"	A	9	228.6	10	254	10	254	10 3/4	273	11 1/2	292	12 1/4	311	14	356
	b	15/16	23.8	1 1/4	31.7	1 3/8	34.9	1 1/2	38.1	1 3/4	44.4	2 1/8	54	3	76.2
	D ₂	6 3/16	157.2	6 3/16	157.2	6 3/16	157.2	6 3/16	157.2	6 3/16	157.2	6 3/16	157.2	6 3/16	157.2
	D ₁	7 1/2	190	7 7/8	200	7 7/8	200	8 1/2	215.9	9 1/4	235	9 1/2	241	10 3/4	273
	n	8	8	8	8	8	8	8	8	8	8	8	8	8	8
	d	3/4	19	7/8	22.2	1	25.4	1	25.4	1 1/4	31.8	1 3/8	34.9	1 5/8	41.3
5"	A	10	254	11	279.4	11	279.4	13	330.2	13 3/4	349	14 3/4	375	16 1/2	419
	b	15/16	23.8	1 3/8	34.9	1 1/2	38.1	1 3/4	44.4	2	50.8	2 7/8	73	3 5/8	92.1
	D ₂	7 5/16	185.7	7 5/16	185.7	7 5/16	185.7	7 5/16	185.7	7 5/16	185.7	7 5/16	185.7	7 5/16	185.7
	D ₁	8 1/2	215.9	9 1/4	234.9	9 1/4	234.9	10 1/2	266.7	11	279	11 1/2	292	12 3/4	324
	n	8	8	8	8	8	8	8	8	8	8	8	8	8	8
	d	7/8	22.2	7/8	22.2	1	25.4	1 1/8	28.6	1 3/8	34.9	1 5/8	41.3	1 7/8	47.6
6"	A	11	279	12 1/2	317.5	12 1/2	317.5	14	355.6	15	381	15 1/2	394	19	483
	b	1	25.4	1 7/16	36.5	1 5/8	41.3	1 7/8	47.6	2 3/16	55.6	3 1/4	82.6	4 1/4	108
	D ₂	8 1/2	216	8 1/2	215.9	8 1/2	215.9	8 1/2	215.9	8 1/2	215.9	8 1/2	215.9	8 1/2	216
	D ₁	9 1/2	241	10 5/8	269.9	10 5/8	269.9	11 1/2	292.1	12 1/2	318	12 1/2	318	14 1/2	368
	n	8	8	12	12	12	12	12	12	12	12	12	12	12	8
	d	7/8	22.2	7/8	22.2	1	25.4	1 1/8	28.6	1 1/4	31.8	1 1/2	38.1	2 1/8	54
8"	A	13 1/2	342.9	15	381	15	381	16 1/2	419	18 1/2	470	19	482.6	21 3/4	552
	b	1 1/8	28.6	1 5/8	41.3	1 7/8	47.6	2 3/16	55.6	2 1/2	63.5	3 5/8	92.1	5	127
	D ₂	10 5/8	269.9	10 5/8	269.9	10 5/8	269.9	10 5/8	269.9	10 5/8	269.9	10 5/8	269.9	10 5/8	269.9
	D ₁	11 3/4	298.4	13	330.2	13	330.2	13 3/4	349.2	15 1/2	394.2	15 1/2	394.2	17 1/4	438
	n	8	8	12	12	12	12	12	12	12	12	12	12	12	12
	d	7/8	22.2	1	25.4	1 1/8	28.6	1 1/4	31.8	1 1/2	38.1	1 3/4	44.5	2 1/8	54
10"	A	16	406.4	17 1/2	444.5	17 1/2	444.5	20	508	21 1/2	546	23	584	26 1/2	673
	b	1 3/16	30.2	1 7/8	47.6	2 1/8	54	2 1/2	63.5	2 3/4	69.8	4 1/4	108	6 1/2	165
	D ₂	12 3/4	323.8	12 3/4	323.8	12 3/4	323.8	12 3/4	323.8	12 3/4	323.8	12 3/4	323.8	12 3/4	323.8
	D ₁	14 1/4	361.9	15 1/4	387.4	15 1/4	387.4	17	431.8	18 1/2	470	19	482.6	21 1/4	540
	n	12	12	16	16	16	16	16	16	16	16	12	12	12	12
	d	1	25.4	1 1/8	28.6	1 1/4	31.8	1 3/8	34.9	1 1/2	38.1	2	50.8	2 5/8	66.7

