

Specifications, Standards and Tolerances

Specifications and Standards

NSF/ANSI Standard 14

NSF/ANSI Standard 61

ASTM D 1784 : Material CPVC Type IV, Grade I Gray (cell classification 23447) – Pipe & Fittings

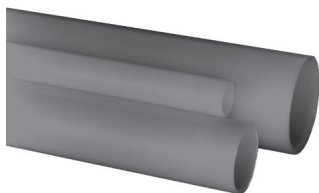
ASTM F 441 : CPVC Schedule 40 and Schedule 80 Pipe

CSA B137.6 : CPVC Schedule 80 Pipe (1¼"–2½" only)

ULC S102.2 : CPVC Schedule 40 Pipe (½"–24"); Schedule 80 Pipe (½"–12")

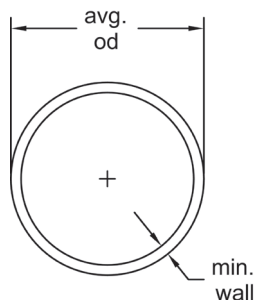
Molded Dimension Tolerances

A	Piston Position; Expansion Joints : ±0.03
D	Outside Diameter : ± 0.06
G, G1	Intersections of centerlines to bottom of socket; 90° Ells, Tees : up to 4" ±0.03; 6" and above ±0.06
GJ, GN	Intersections of centerlines to bottom of socket; 45° Wyes : up to 4" ±0.03; 6" and above ±0.06
H, HJ, HN	Intersections of centerlines to face of fitting; 90° Ells, 45° Ells, Tees, 45° Wyes : up to 4" ±0.03; 6" and above ±0.06
HL	Socket Bottom to Face of Fitting : up to 4" ±0.03; 6" and above ±0.06
J	Intersections of centerlines to bottom of socket; 45° & 30° Ells : up to 4" ±0.03; 6" and above ±0.06
L	Overall Length of fitting : ± 0.06
N	Socket Bottom to Socket Bottom; Couplings, Unions : ± 0.06
N1	Socket Bottom to Face of Flange : ± 0.06
R	Thickness on Plugs, Flanges : ± 0.03
T, T1	Effective Thread Length : Reference Only
W	Height of Cap : ± 0.06



Schedule 80 CORZAN® CPVC Plain End Pipe - 20 Ft Lengths

- Max Water Pressure at 73°F (22.7°C) with solvent-cemented joints



Size (inch)	P/L	Plain End Part No.	Lift Qty (ft)	Average O.D. (inch)	min. wall (inch)	Wt/Ft (lbs/ft)	Max Water Pressure (psi)
¼	H06	H0800025CG2000	5700	0.540	0.119	0.112	1130
⅜	H06	H0800038CG2000	5700	0.675	0.126	0.154	920
½	H06	H0800050CG2000	5700	0.840	0.147	0.225	850
¾	H06	H0800075CG2000	5260	1.050	0.154	0.305	690
1	H06	H0800100CG2000	4280	1.315	0.179	0.449	630
1 ¼	H06	H0800125CG2000	2360	1.660	0.191	0.618	520
1 ½	H06	H0800150CG2000	2060	1.900	0.200	0.751	470
2	H06	H0800200CG2000	1660	2.375	0.218	1.040	400
2 ½	H06	H0800250CG2000	1080	2.875	0.276	1.584	420
3	H06	H0800300CG2000	840	3.500	0.300	2.124	370
3 ½	H06	H0800350CG2000	680	4.000	0.318	2.607	350
4	H06	H0800400CG2000	520	4.500	0.337	3.105	320
5	H06	H0800500CG2000	400	5.563	0.375	4.343	290
6	H06	H0800600CG2000	340	6.625	0.432	5.929	280
8	H06	H0800800CG2000	220	8.625	0.500	9.051	250
10	H06	H0801000CG2000	80	10.750	0.593	13.429	230
12	H06	H0801200CG2000	60	12.750	0.687	18.458	230
14	H06	H0801400CG2000	60	14.000	0.750	22.224	220
16	H06	H0801600CG2000	60	16.000	0.843	28.557	220
18	H06	H0801800CG2000	40	18.000	0.937	35.745	220
20	H06	H0802000CG2000	40	20.000	1.031	45.022	220
24	H06	H0802400CG2000	40	24.000	1.218	63.878	210